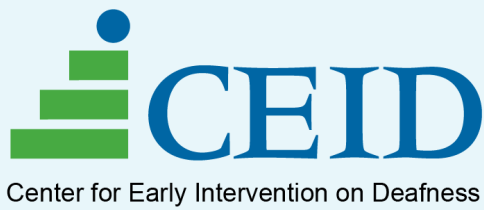


YEAR IN REVIEW

2022- 2023



*Maximizing
Potential
Since **1980***



*Proven Programs
& Comprehensive
Services*

*Resulting in
Children &
Families Who
Thrive*

Education Programs

Over 80 children, birth to age 6, and their families received support through our core education and family engagement programming.

D/HH Specialized Services

148 hours
Occupational
Therapy

160 hours
Educational
Audiology

1195 hours
Toddler &
Preschool
Instruction

726 hours
Speech &
Language
Therapy

Family Engagement and Care

302
Home Visits

169 hours
Deaf
Coaching

88
Family Sign
Classes & Educational
Webinars

2151 hours
Inclusive
Preschool &
Childcare

“ *The staff love and care for all the students, making it feel like a safe space. I love how much thought goes into the students' full sensory and language opportunities and that everything we need is in-house.*

We are so grateful for CEID! -CEID Parent ”

Parents agree because of CEID their child...

- Developed language (both signed and spoken).
- Developed empathy and understanding of feelings.
- Increased their socialization skills with peers.
- Improved their language, speech, and auditory skills.
- Decreased frustration due to better communication skills.
- Connected with Deaf role models and learned about Deaf culture.



Parents share because of CEID they...

- Can better communicate with their child.
- Understand more fully their child's language and communication needs.
- Have more confidence in implementing new strategies for communication at home.

Audiology Clinics

Over 1100 individuals of all ages received audiology services at our Berkeley and Oakland Clinics.

446 Hearing Aids Fitted

1034 Hearing Evaluations

1597 Appointments



100% of patients report improved quality of life (access to sound in environments and communication) after receiving hearing aids from CEID

After visiting the clinic, patients reported...

- Improved understanding of their hearing level and of support services.
- The clinic team was respectful of their personal background.
- Their Audiologist was knowledgeable, listened to their concerns and thoroughly explained results.
- They would recommend CEID Audiology to their friends and/or family.

“ This place is AWESOME, I can hear what the world is saying because of CEID! ”

-CEID Patient

The CEID Community

Our patients, students, and families reside in 11 Northern California counties, predominantly Alameda County, Contra Costa County, and San Francisco County, and represent the rich diversity of the San Francisco Bay Area.

Most patients (82%) and students' families (67%) identify as **Black, Indigenous, People of Color**. Twenty-eight primary home languages are used among our community members.

100% of the children in our education programs are birth to age 6 while our audiology programs support patients of all ages with 20% of patients birth to age 24; 39% 25-64 years old and 41% over age 65.

The majority of our Audiology patients (75%) had some form of **MediCal (Medicaid) insurance**. We continue to be one of the few audiology providers assisting adult patients who are low income.

Investing In Impact

We rely on diversified funding to sustain our work. Though direct fees for service generate a large part of our funding, one-third of our revenues come from the generosity of individual donors, family foundations, and special fundraising events.

Thank you for your impact.

Total Revenue: \$2,184,872

Program Revenue: 61%

Early Education & Support: 72%

Audiology Services: 28%

Fundraising Revenue: 39%

Foundations: 47%

Individuals: 28%

Special Events: 25%

Total Expenses: \$2,127,370

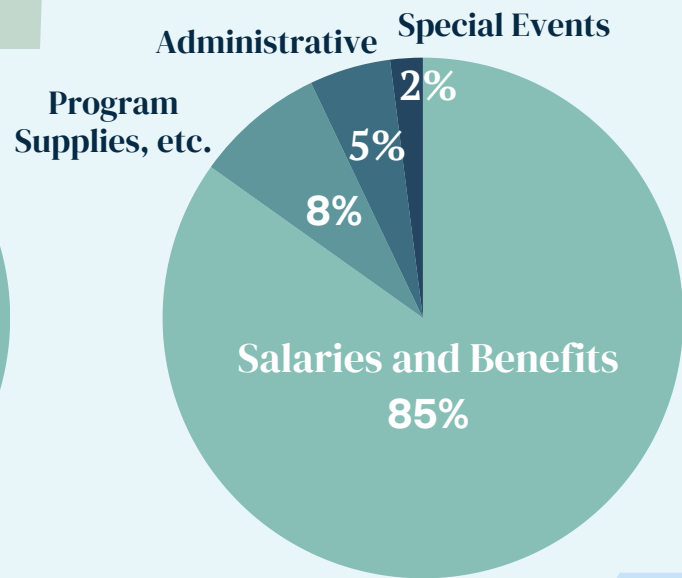
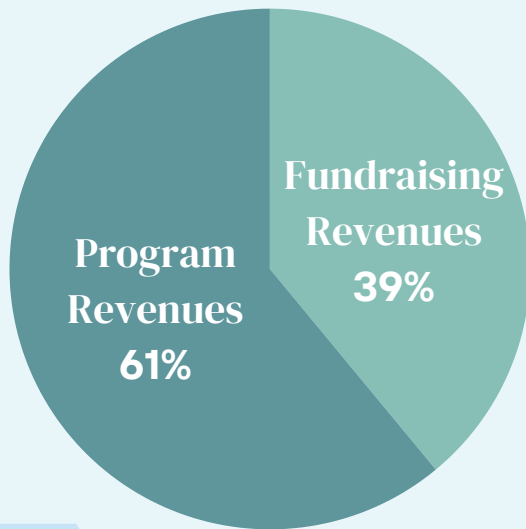
Salaries & Benefits: 85%

Program Supplies,

Building and Equipment: 8%

Administrative: 5%

Special Events: 2%



Connect With Us

- Help us deliver results by making a tax-deductible donation today!
- Volunteer at events or in our programs.
- Follow, like, and share posts on social media to help spread the word about CEID's impact.

Visit www.ceid.org
for more information.

